

HC-25 方案的 WiFi 模块，配置为远程连接

WiFi module of HC-25 solution, configured for remote monitoring

*** 远程连接模式 ***

*** Remote Control Mode ***



*** 复位按钮的操作 ***

*** Reset button operation ***

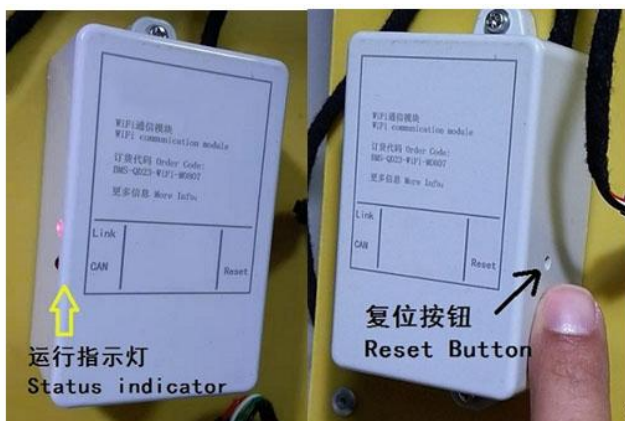
- 恢复默认的访问密码（不是 WiFi 密码）：按下按键保持，2 个 LED 同时闪烁；约 5 秒后，变为 1 个 LED 闪烁，此时松开按键，密码恢复为默认的 123456

Restore the default access password (not the WiFi password): press the button and hold it, two leds blink at the same time; After about 5 seconds, it will turn to 1 LED flashing, release the button at this time, and the password will return to the default 123456

- 激活 WiFi 配置页面：按下按键保持，2 个 LED 同时闪烁，约 5 秒后变为 1 个 LED 闪烁，又经过 5 秒后 2 个 LED 全部停止闪烁，此时松开按键，WiFi 参数配置页面被激活，网络配置被清除，访问密码恢复为 123456。此时，请按照说明，及时完成网络参数配置，因为 WiFi 此时是没有密码的。

Activate the WiFi configuration page: press the button and hold it, and two leds blink at the same time. After about 5 seconds, one LED blinks, and after 5 seconds, all two leds stop blinking. At this time, release the button, the WiFi parameter configuration page is activated, the network configuration is cleared, and the access password is restored to 123456. In this case, please follow the instructions and complete the network parameter configuration in time, because you can access without WiFi password at this time.

- 短按 1 次：清除 WiFi 模块的网络在线状态，触发 WiFi 模块与调试软件握手通信。普通用户基本不用这个功能，无需关注。Press one time to clear the network status of the WiFi module and trigger handshake communication between the WiFi module and the debugging software. Users basically do not use this function, do not need to take care of it



*** 准备工作 ***

*** Preparation For Work ***

- 带有 WiFi 功能的安卓 4.0 以上的手机，或 Windows XP 以上的电脑

Phones with WiFi and Android 4.0 or above, or Computers with Windows XP or above

- 能够连接互联网的 WiFi 路由或手机热点

A WiFi route or mobile hotspot that can connect to the Internet

- 联系我们获取“远程转发服务器的地址和端口”；或者，您自己架设远程转发服务器。

Contact us for the "Address and port of the remote forwarding server"; Alternatively, set up your own remote forwarding server

用牙签等绝缘物体，按住 WiFi 模块上的复位按钮，按照“复位按钮的操作”激活 WiFi 配置页面。激活成功后，会搜索到 HC-25 开头的一个临时 WiFi 信号，连接这个 WiFi，默认无需密码；

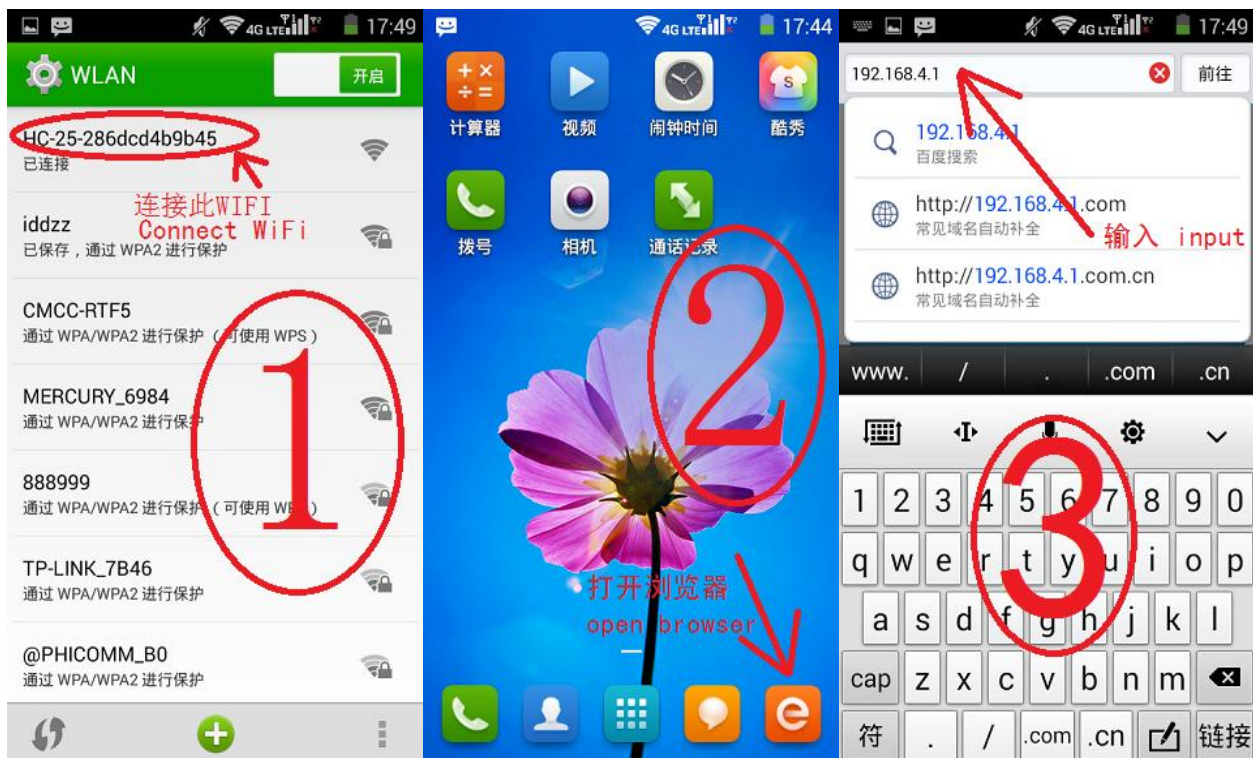
Press and hold the reset button on the WiFi module with an insulated object such as a toothpick, and follow the "Reset Button operation" to activate the WiFi configuration page. After successful activation, a temporary WiFi signal at the beginning of HC-25 will be found. By default, no password is required to connect to this WiFi.

确保电脑或手机只连接了这个 WiFi，而没有其它网络。例如，需要关闭手机的移动数据。

Make sure your computer or phone is only connected to this WiFi network and no other networks. For example, you need to turn off your phone's mobile data.

打开浏览器，输入 192.168.4.1，回车，进入登录页面；

Open the browser, enter 192.168.4.1, and press "enter" to enter the login page.



无需输入登录密码，直接点击登录；

No need to enter the login password, directly click "login"



以下标注五星符号的，为必须设置项；未标注五星符号的项目，保持默认即可。

The following marks the five-star symbol, must be set items; For items that are not marked with the five-star symbol, keep the default value.

没有特殊说明的地方，请设置为与图中相同的参数。

If there are no special instructions, set the parameters as shown in the figure.



输入您自己的 WiFi 和密码,

Enter your own WiFi and password



备注 1 的位置，将前面的准备工作中，得到的“远程转发服务器的地址和端口”输入。

Note 1: Enter the address and port of the remote forwarding server obtained in the previous preparation.



点击保存、确认，完成设置。然后重启 WiFi 模块。稍等几十秒，进行下一步。

Click "Save" and "confirm" to complete the setting. Then restart the WiFi module. Wait a few seconds for the next step.



*** Windows 电脑软件，远程连接 BMS ***

*** Windows PC software, remote connection to BMS ***

先将电脑调整为正常连接互联网状态，然后启动资料包中“BMS-QD23_Windows.exe”的调试软件。

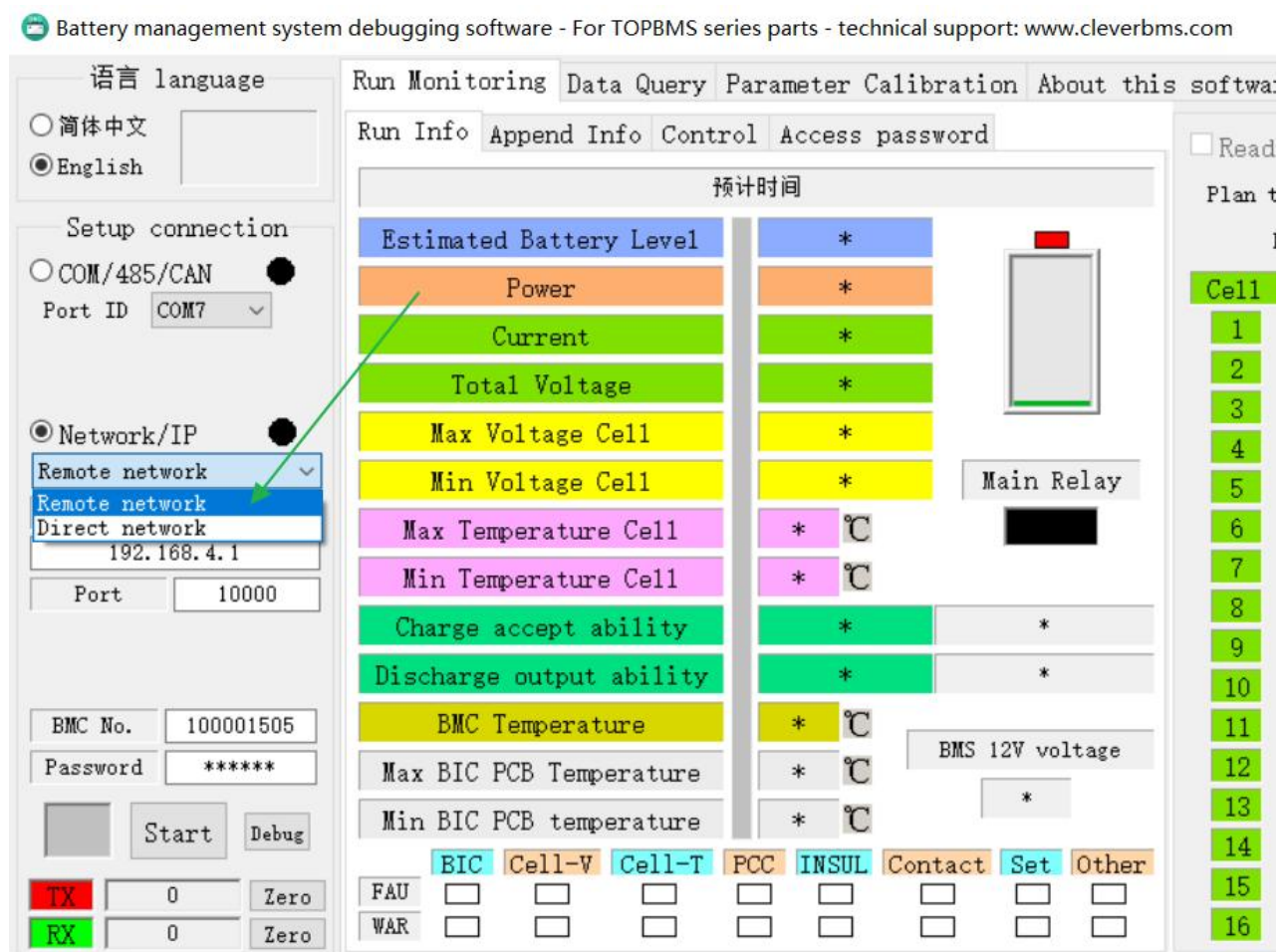
First of all, adjust the computer to be connected to the Internet, and then start the debugging software "BMS-QD23_Windows.exe" in the package.

按照下图，调整软件参数，最后点击开始，如果全部参数配置正确，软件上就会显示出 BMS 的运行参数。

Adjust the software parameters according to the following figure, and click "Start" at last. If all parameters are correctly configured, the running parameters of BMS will be displayed on the software.

下图的访问密码，不是 WiFi 密码，默认为 123456

The access password as below is not the WiFi password, and the default is 123456



*** 安卓手机，远程连接 BMS ***

*** Android phone, remote connection to BMS ***

目前，安卓手机 app 仅提供数据查看功能，参数标定请在电脑端软件操作。

At present, Android mobile phone app only supports data monitoring, parameter change can be operated on the computer software.

将手机调整为正常连接互联网的状态，

Adjust the phone to connect to the standard Internet

将资料包中“BMS_QD23.apk”文件复制到手机，然后安装到手机中。

Copy the "BMS_QD23.apk" file from the package to the phone, and then install it into the phone.

注意：需要给 APP 存储权限， Note: Need to give APP storage permission,

下图的访问密码，不是 WiFi 密码，默认为 123456

The access password as below is not the WiFi password, and the default is 123456

点击连接，如果配置过程正确，APP 即可正常显示 BMS 信息

Click "Connect", if the configuration process is correct, the APP can display BMS information normally



Note: Please check the rear side of Master bms and you will find BMS Number as below :

BMC Number

